

Nook

2 — 2021

Nook is a publication by the BNI and the
AINB on interior architecture.



PAGE 14

Maison 226, Melle
Photo - Barbara De Prest

Emptiness, simplicity and day light prevail in interior architect Barbara De Prest's design for the Maison 226 office building in Melle. One particularly striking stand-out feature is the imposing library bookcase which separates the reception area from the work area. Potted plants and trees, a ventilation system and an ionisation system combine to ensure a healthy indoor climate.

AIR

‘The Zeeland skies are absorbed into the interior’

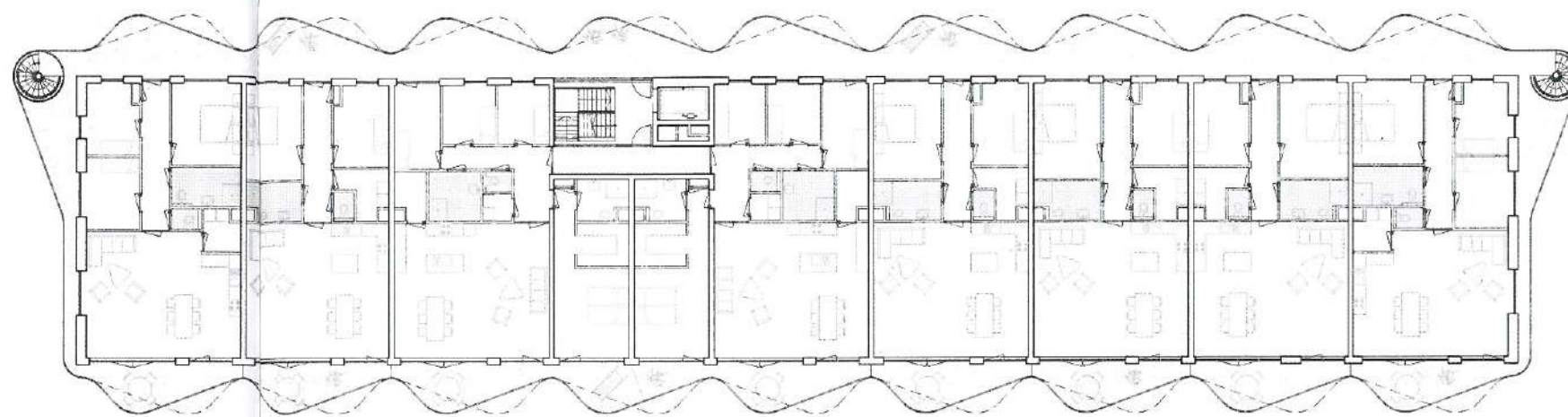
Text ZOETMULDER

Image Jeroen Verrecht

Westerschans 1B is characterised by wavy balconies. The building contains spacious apartments on a transparent plinth with retail space. Just like the urban integration plan, the building was designed by the architectural combination ZOETMULDER and Jeanne Dekkers Architecture.

The rounded and transparent shapes of the retail plinth connect the upper shopping area with the lower car-free quay. Due to the transparency and the centrally located passage towards the water, the building has an airy, almost floating appearance. The transparent appearance was also retained when the retail spaces were taken into use. “The interior of the stores are visible from both the shopping center and the quay,” says Anton Zoetmulder. “An airy connection between the water and the shopping center is created between, through and along the building.”

Most eye-catching are the wavy balconies. These curves give the building a powerful identity and make the volume appear light. The undulating balconies overlook the water on the east side and catch the sunlight from the south in the protruding point. At the same time, the protruding point on the gallery on the west side provides an additional semi-private outdoor space with evening sun. “The interior of the apartments merges on two sides into a generous outdoor space, the Zeeland skies are absorbed into the interior.” The wavy shape refers to the omnipresent water and the cantilever all around provides passive sun protection to prevent overheating. Two emergency staircases have also been incorporated into the waves of the gallery. Thus, the expressive balconies become an integral design solution.



| | |
|-------------|--|
| Project | Westerschans 1B |
| Client | Beveland Wonen, Marsaki |
| Location | Goes |
| Realization | 2020 |
| Designer | Jeanne Dekkers Architecture and ZOETMULDER |
| Website | zoetmulder.eu |